

Cheetah Plus HC 78M 430-450 Watt

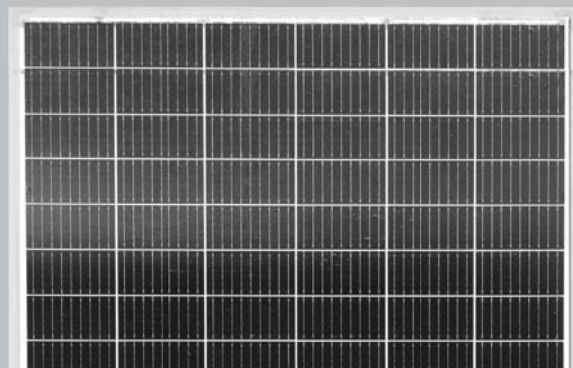
MONO PERC HALF CELL MODULE

Positive power tolerance of 0~+3%

- Half Cell
- Mono PERC 78 Cell



PERC



KEY FEATURES



9BB instead of 5BB

9BB technology decreases the distance between bus bars and finger grid line which is benefit to power increase.



High Efficiency

Higher module conversion efficiency (up to 20.73%) benefit from half cell structure (low resistance characteristic).



PID Resistance

Excellent Anti-PID performance guarantee limited power degradation for mass production.



Low-light Performance

Advanced glass and cell surface textured design ensure excellent performance in low-light environment.



Severe Weather Resilience

Certified to withstand: wind load (2400 Pascal) and snow load (5400 Pascal).



Durability Against Extreme Environmental Conditions

High salt mist and ammonia resistance certified by TUV NORD.

LINEAR PERFORMANCE WARRANTY

12 Year Product Warranty • 25 Year Linear Power Warranty

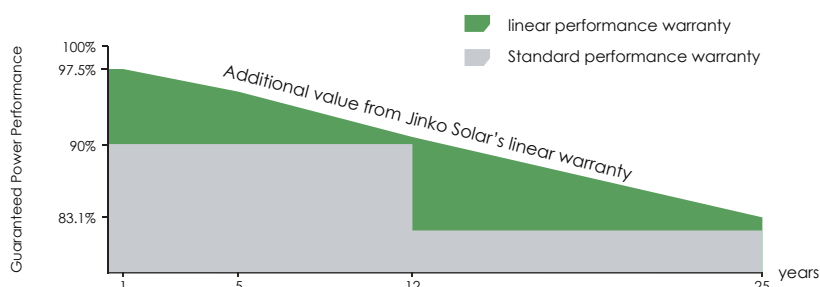


- ISO9001:2015, ISO14001:2015, ISO45001:2018 certified factory
- IEC61215, IEC61730, UL1703 certified product

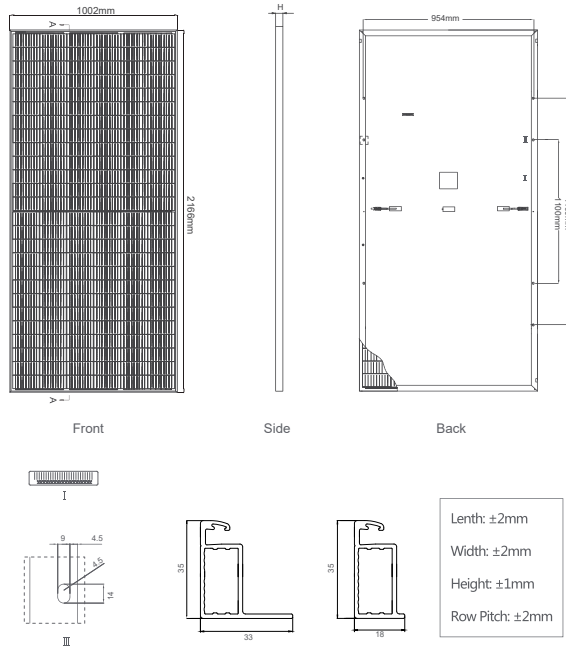
Nomenclature:

JKMxxxM-66/78H-MBB-V

Code	Cell	Code	Certification	Code	Certification
null	Full	null	5BB	null	1000V
H	Half	MBB	9BB	V	1500V



Engineering Drawings

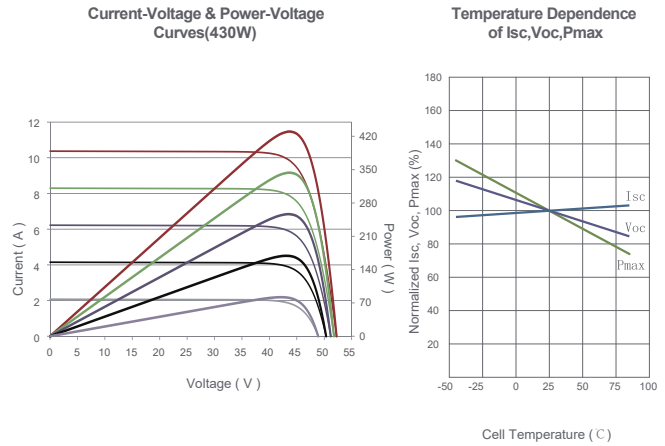


Packaging Configuration

(Two pallets = One stack)

31pcs/pallet, 62pcs/stack, 620pcs/40' HQ Container

Electrical Performance & Temperature Dependence



Mechanical Characteristics

Cell Type	Mono PERC 158.75×158.75mm
No. of cells	156 (6×26)
Dimensions	2166×1002×35mm (85.28×39.45×1.38 inch)
Weight	24 kg (52.91 lbs)
Front Glass	3.2mm, Anti-Reflection Coating, High Transmission, Low Iron, Tempered Glass
Frame	Anodized Aluminium Alloy
Junction Box	IP67 Rated
Output Cables	TUV 1×4.0mm ² (+): 290mm, (-): 145mm or Customized Length

SPECIFICATIONS

Module Type	JKM430M-78H-MBB		JKM435M-78H-MBB		JKM440M-78H-MBB		JKM445M-78H-MBB		JKM450M-78H-MBB	
	JKM430M-78H-MBB-V		JKM435M-78H-MBB-V		JKM440M-78H-MBB-V		JKM445M-78H-MBB-V		JKM450M-78H-MBB-V	
	STC	NOCT	STC	NOCT	STC	NOCT	STC	NOCT	STC	NOCT
Maximum Power (Pmax)	430Wp	320Wp	435Wp	324Wp	440Wp	327Wp	445Wp	331Wp	450Wp	335Wp
Maximum Power Voltage (Vmp)	43.49V	40.04V	43.55V	40.15V	43.65V	40.36V	43.72V	40.52V	43.81V	40.78V
Maximum Power Current (Imp)	9.89A	7.99A	9.99A	8.06A	10.08A	8.11A	10.18A	8.17A	10.27A	8.21A
Open-circuit Voltage (Voc)	51.52V	48.53V	51.61V	48.61V	51.70V	48.70V	52.04V	49.02V	52.13V	49.10V
Short-circuit Current (Isc)	10.57A	8.54A	10.67A	8.62A	10.77A	8.70A	10.84A	8.76A	10.92A	8.82A
Module Efficiency STC (%)	19.81%		20.04%		20.27%		20.50%		20.73%	
Operating Temperature(°C)	-40°C~+85°C									
Maximum system voltage	1000/1500VDC (IEC)									
Maximum series fuse rating	20A									
Power tolerance	0~+3%									
Temperature coefficients of Pmax	-0.35%/°C									
Temperature coefficients of Voc	-0.29%/°C									
Temperature coefficients of Isc	0.048%/°C									
Nominal operating cell temperature (NOCT)	45±2°C									

* STC: Irradiance 1000W/m² Cell Temperature 25°C AM=1.5

NOCT: Irradiance 800W/m² Ambient Temperature 20°C AM=1.5 Wind Speed 1m/s

* Power measurement tolerance: ± 3%